



JCD VIP 2 - 15%

€316.300/ 7 days*

*Exclusive technical cost, production and taxes

2310 screens

[Maps & detailed info](#)



CIM OOH study TG18-54

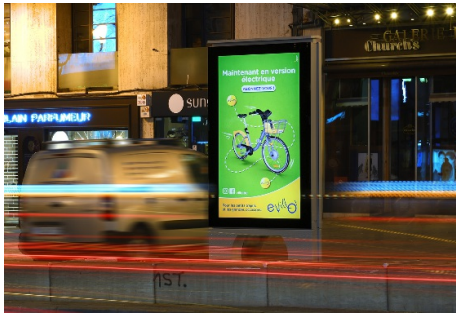
| | | | |
|------------|----------|---------|------|
| Contractor | JCDecaux | | |
| Taxes | €13.141 | VAR (%) | |
| Technical | | VAR | 11.5 |
| Costs | | VRP | 806 |
| Lightened | | | |

Description:

Network Composition

JCD VIP 2 - 15% - Paper 2m²

Environment Roadside
Subenvironment
Lightened < 90%
Startday Tuesday
Campaign
Placement 24h



JCD VIP 2 - 15% - Digital 85'

Environment Roadside
Subenvironment
Share of time: 15
Screen Active 5:00 AM - 1:00
AM



JCD VIP 2 - 15% - Digital 75'

Environment Roadside
Subenvironment
Share of time: 15
Screen Active 5:00 AM - 1:00
AM

Technical Information

| | | | |
|--------------|----------|------------------|--------------------|
| Size H | 1,75 | Size L | 1,18 |
| Orientation | Vertical | Number of Panels | 2100 |
| Size H | 1,05 | Size L | 1,88 |
| Aspect Ratio | 16:9 | Resolution HxL | 1920 x 1080 |
| Size H | 1,66 | Size L | 0,93 |
| Aspect Ratio | 16:9 | Resolution HxL | 1920 x 1080 pixels |